

CERTIFICATE OF LOCATION OF GOVERNMENT CORNER

NORTH QUARTER Corner of Section 6, Township 107, Range 39, 5TH P.M.

STATE OF MINNESOTA, County of MURRAY

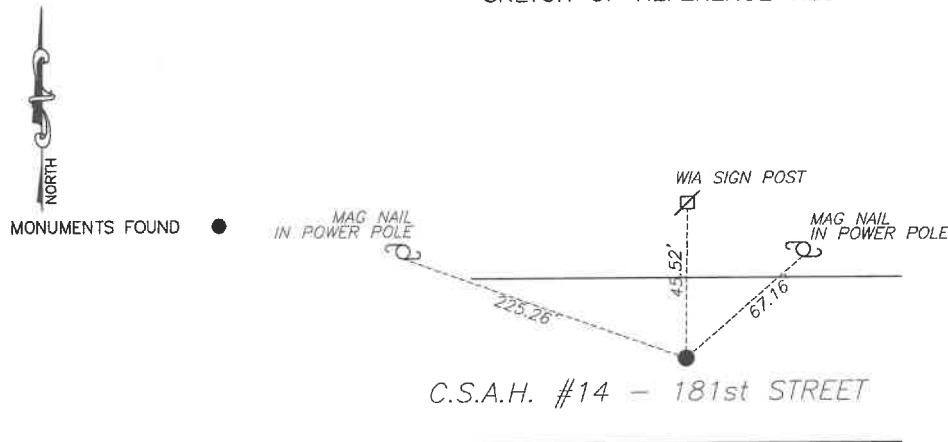
At the corner location shown on the sketch:

☒ On 6/4/2024 found a concrete monument with iron #45874 on the north side.
DATE

☒ left monument as found, ☐ lowered monument, ☐ removed monument (explain)

☐ On _____ placed a _____
DATE

SKETCH OF REFERENCE TIES



Murray County
Coordinate System NAD83 (1996)

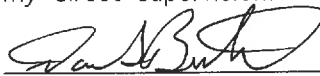
N: 195147.076
E: 550836.501

WGS84

LAT: 44°06'31.9635"
LON: -95°34'23.2929"

Statement of evidence relative to this corner location is on back of page.

I hereby certify that this document and the data contained herein was prepared by me or under my direct supervision.



Daniel L. Bueltel
License No. 43844

3/12/2025
DATE

MAR 13 2025


MURRAY COUNTY RECORDER

Statement of Evidence

NORTH QUARTER CORNER SECTION 6, T107N, R39W of the 5th P.M.

In July of 1861, J.W. Myers layed out the original township lines.

In September of 1861, L. Brockmann did the original township subdivision.

An undated survey of Section 6 notes a concrete monument at the corner.

County records from 1934 note a concrete monument at the corner.

In December 2020 Westwood Professional Services found a concrete monument down 0.5ft and set a $\frac{1}{2}$ " rebar and cap LS #45874 on the north side.

On June 4, 2024 Bueltel-Moseng Land Surveying found a concrete monument with a $\frac{1}{2}$ " rebar with seal #45874 on the north side of the monument.